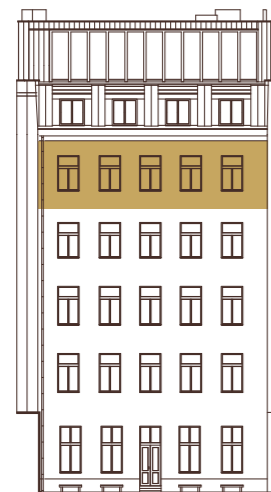
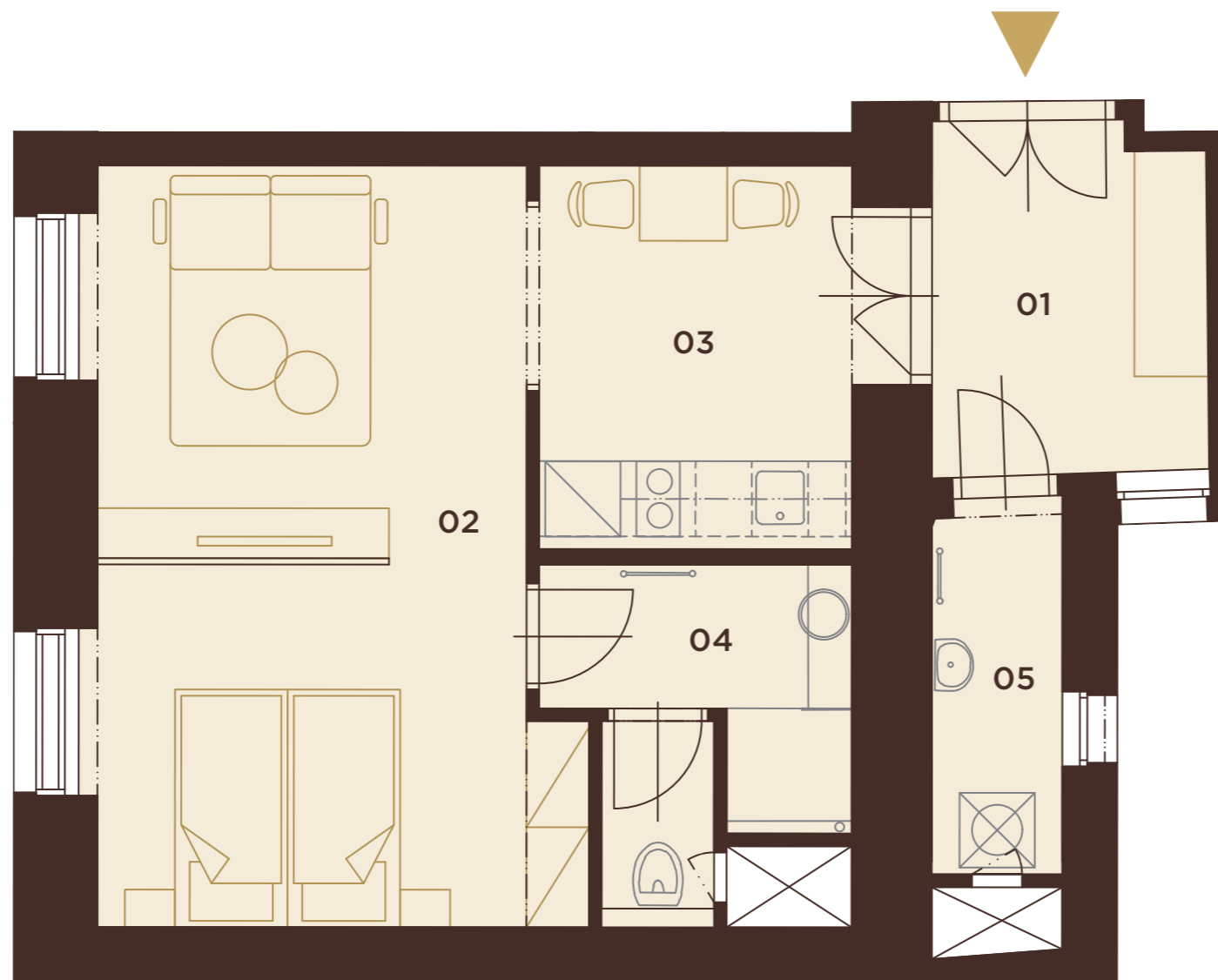


B.5.3



5.NP

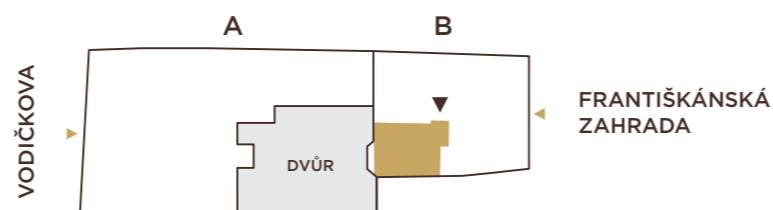
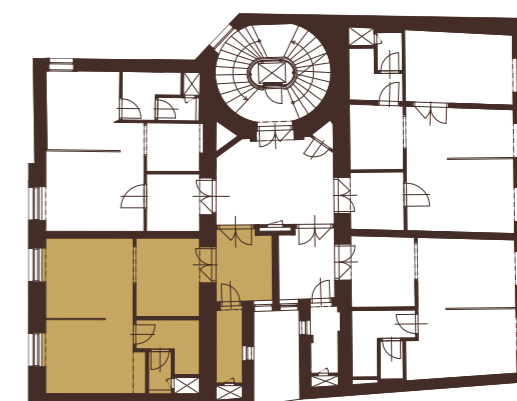
POHLED ZE ZAHRADY



5.NP

1+kk | 49,3 m²

01	předsíň	6,6 m ²
02	obytný prostor	22,7 m ²
03	kuchyňský kout	8,8 m ²
04	koupelna + WC	5,4 m ²
05	komora	3,4 m ²
UŽITNÁ PLOCHA		46,9 m²
PODLAHOVÁ PLOCHA		49,3 m²



VODIČKOVA 33