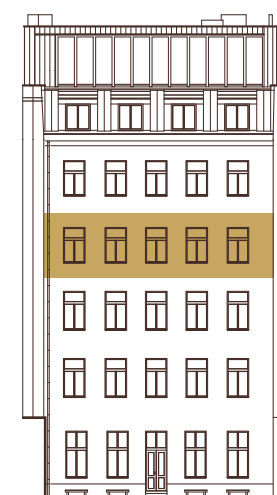
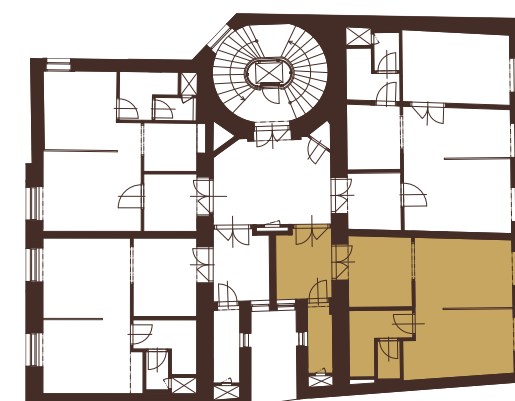


# B.4.2

## 4.NP

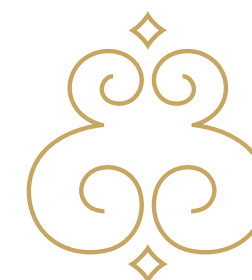
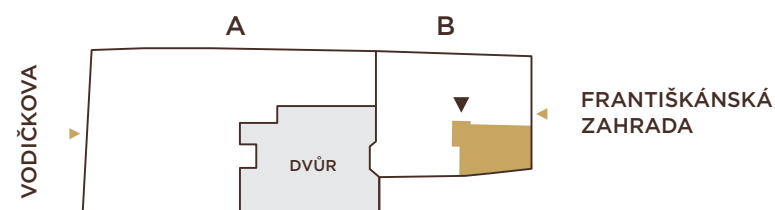
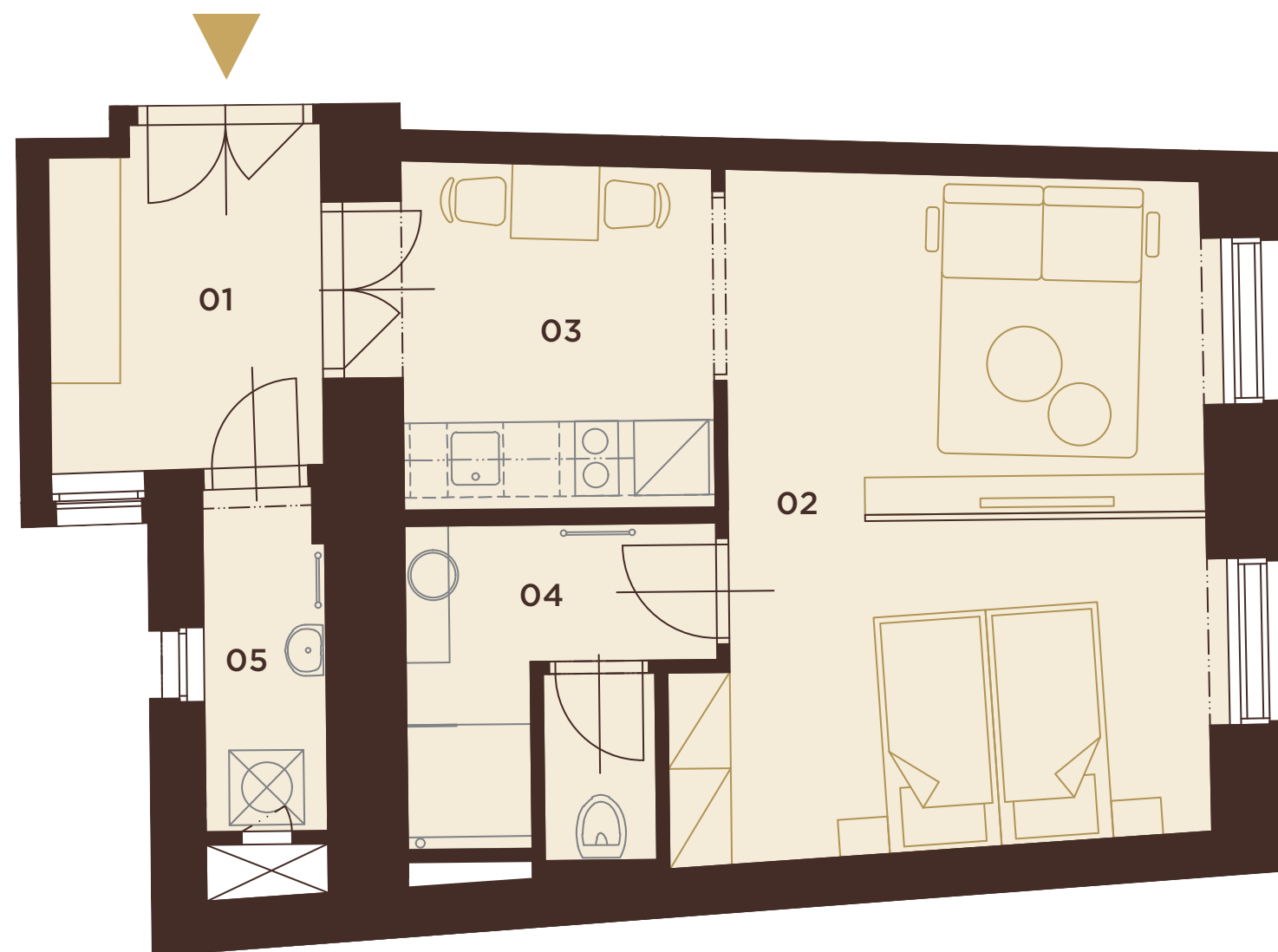
1+kk | 47,4 m<sup>2</sup>

01	předsíň	6,3 m <sup>2</sup>
02	obytný prostor	22 m <sup>2</sup>
03	kuchyňský kout	7,4 m <sup>2</sup>
04	koupelna + WC	6,0 m <sup>2</sup>
05	komora	2,7 m <sup>2</sup>
<b>UŽITNÁ PLOCHA</b>		<b>44,4 m<sup>2</sup></b>
<b>PODLAHOVÁ PLOCHA</b>		<b>47,4 m<sup>2</sup></b>



## 4.NP

POHLED ZE ZAHRADY



# VODIČKOVA 33