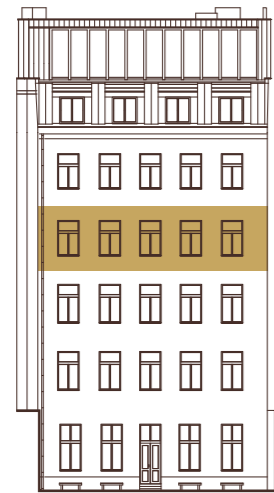
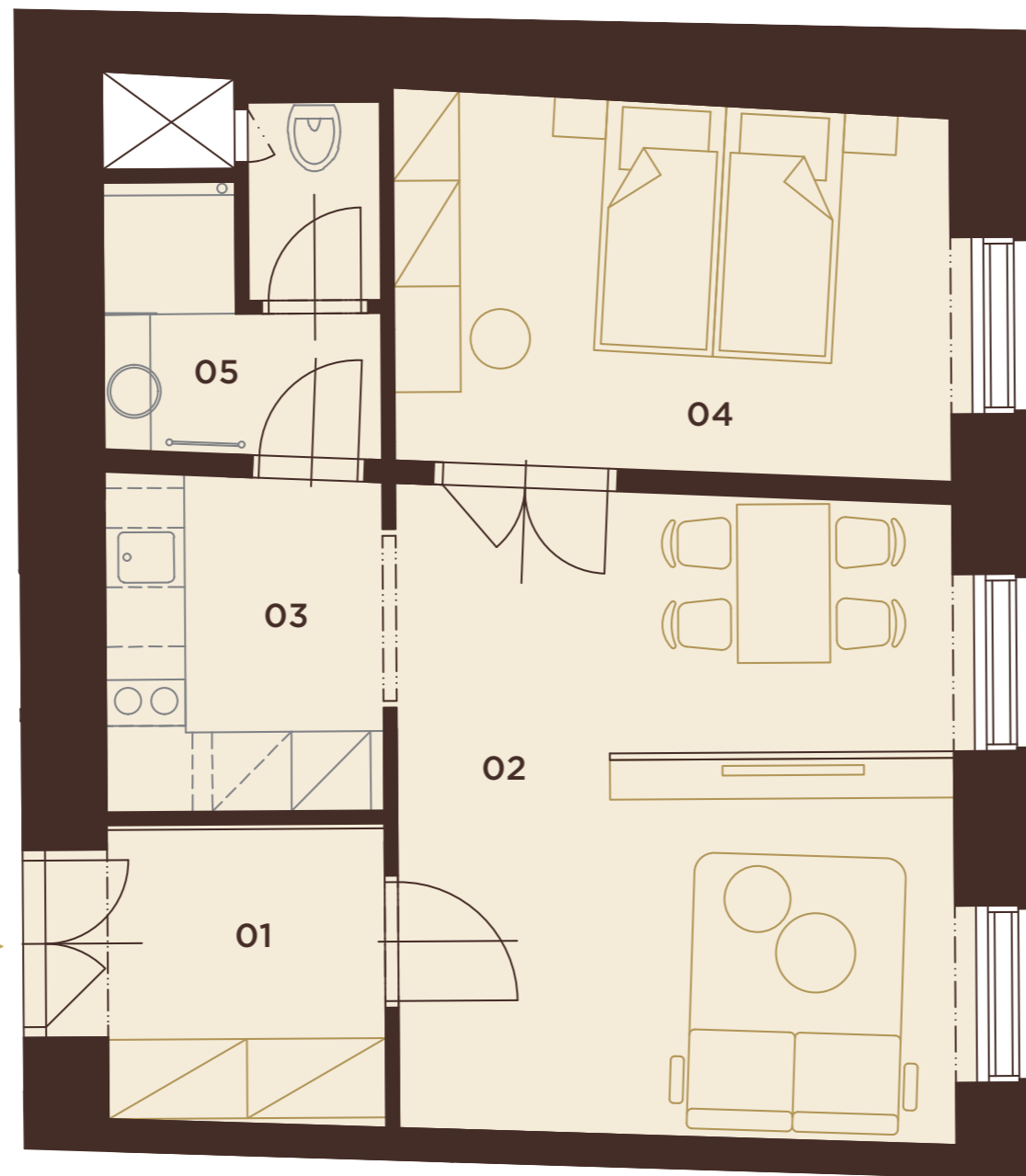


# B.4.1



## 4.NP

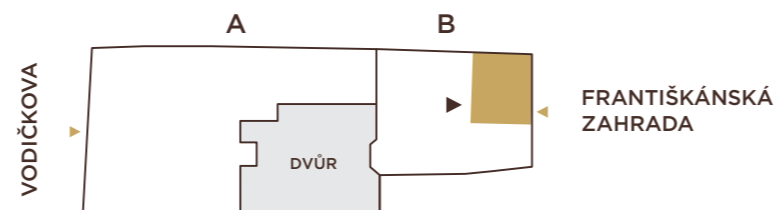
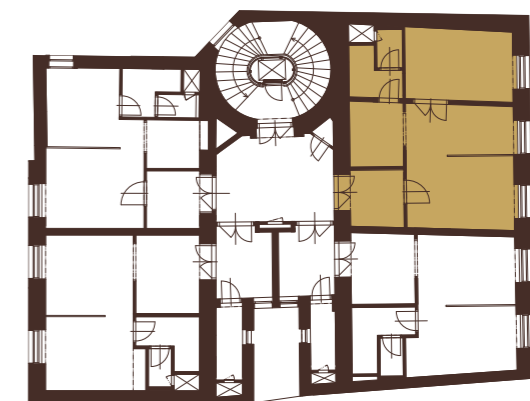
POHLED ZE ZAHRADY



## 4.NP

2+kk | 50,4 m<sup>2</sup>

01	předsíň	5,5 m <sup>2</sup>
02	obytný prostor	20,9 m <sup>2</sup>
03	kuchyňský kout	5,6 m <sup>2</sup>
04	pokoj	12,0 m <sup>2</sup>
05	koupelna + WC	4,8 m <sup>2</sup>
<b>UŽITNÁ PLOCHA</b>		<b>48,8 m<sup>2</sup></b>
<b>PODLAHOVÁ PLOCHA</b>		<b>50,4 m<sup>2</sup></b>



# VODIČKOVA 33