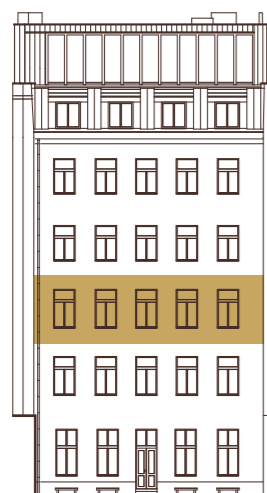


# B.3.4

## 3.NP

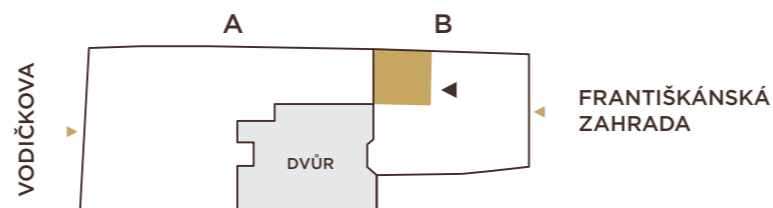
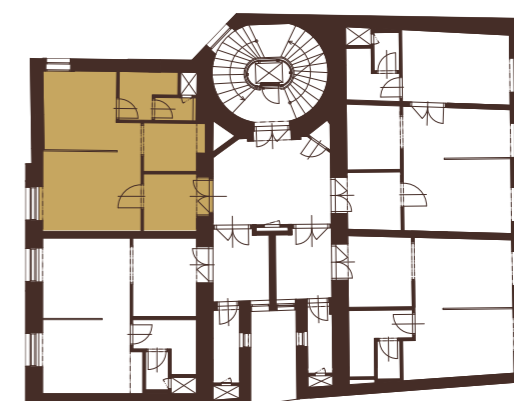
1+kk | 37,1 m<sup>2</sup>

01	předsíň	5,0 m <sup>2</sup>
02	obytný prostor	22,1 m <sup>2</sup>
03	kuchyňský kout	4,2 m <sup>2</sup>
04	koupelna + WC	4,9 m <sup>2</sup>
<b>UŽITNÁ PLOCHA</b>		<b>36,2 m<sup>2</sup></b>
<b>PODLAHOVÁ PLOCHA</b>		<b>37,1 m<sup>2</sup></b>



### 3.NP

POHLED ZE ZAHRADY



## VODIČKOVA 33