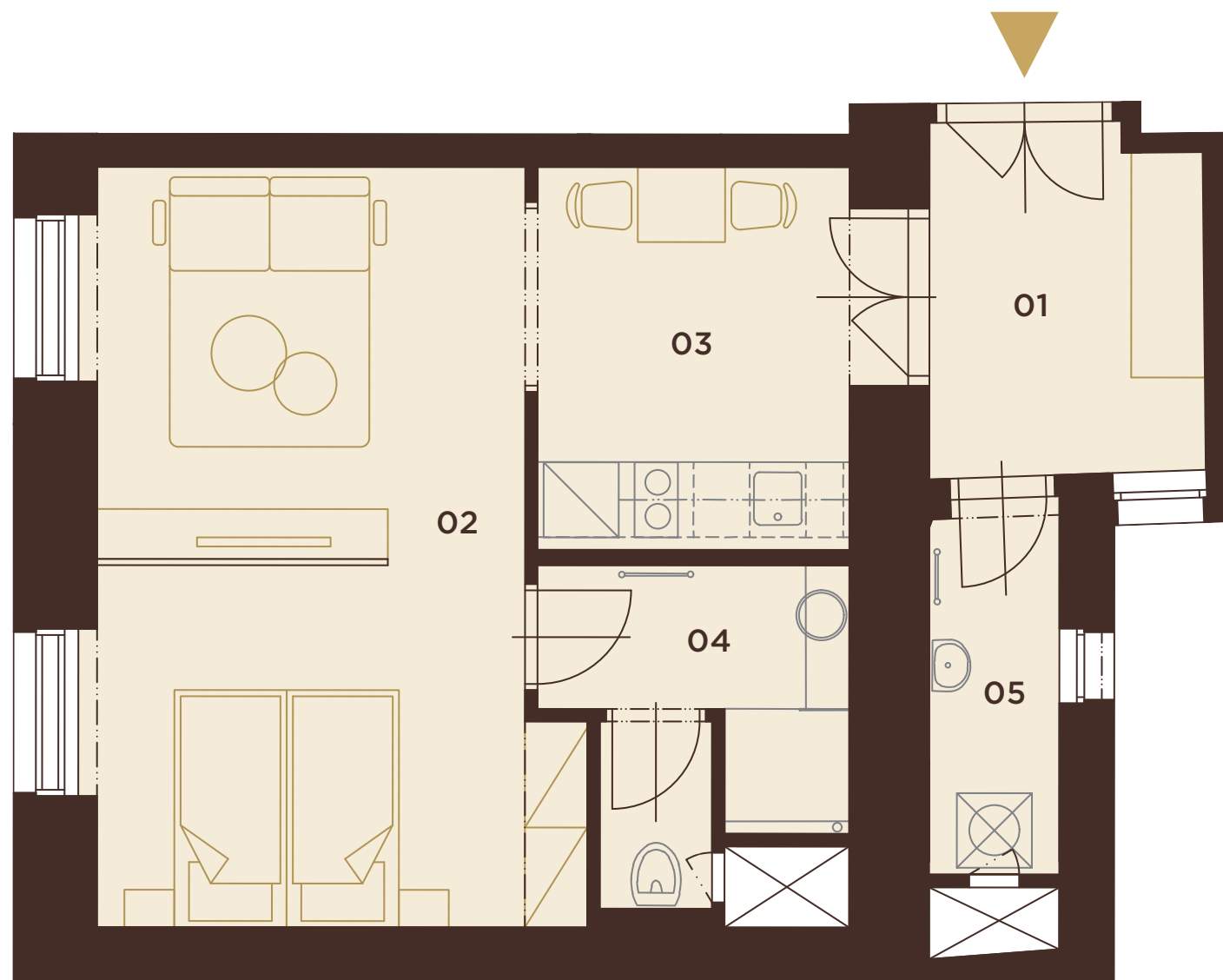


# B.3.3



## 3.NP

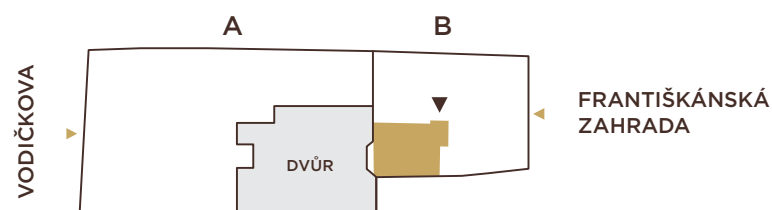
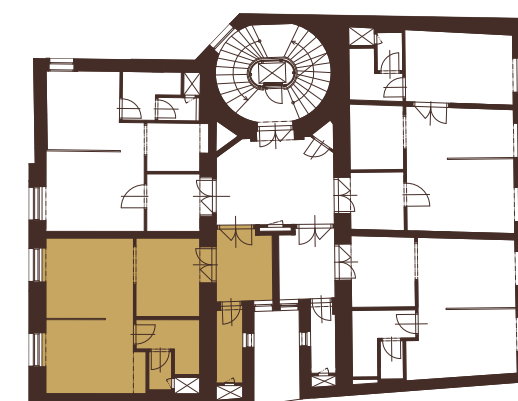
POHLED ZE ZAHRADY



## 3.NP

1+kk | 48,3 m<sup>2</sup>

01	předsíň	6,2 m <sup>2</sup>
02	obytný prostor	21,8 m <sup>2</sup>
03	kuchyňský kout	8,9 m <sup>2</sup>
04	koupelna + WC	5,1 m <sup>2</sup>
05	komora	3,1 m <sup>2</sup>
<b>UŽITNÁ PLOCHA</b>		<b>45,1 m<sup>2</sup></b>
<b>PODLAHOVÁ PLOCHA</b>		<b>48,3 m<sup>2</sup></b>



# VODIČKOVA 33