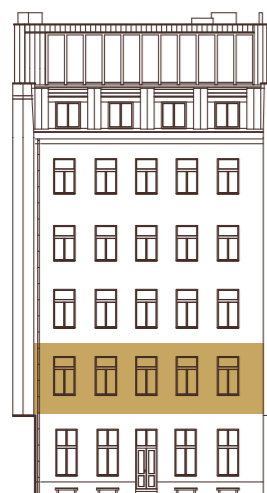


# B.2.4

## 2.NP

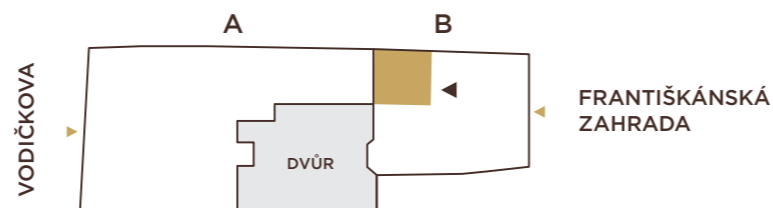
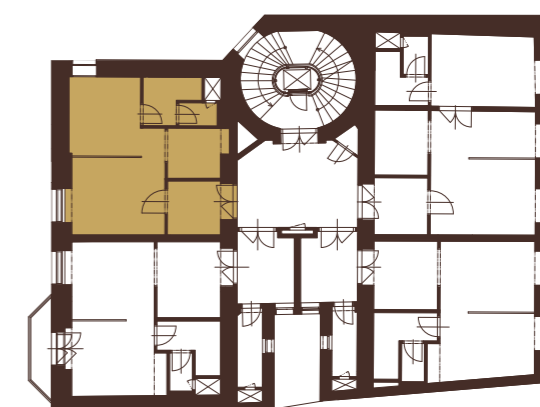
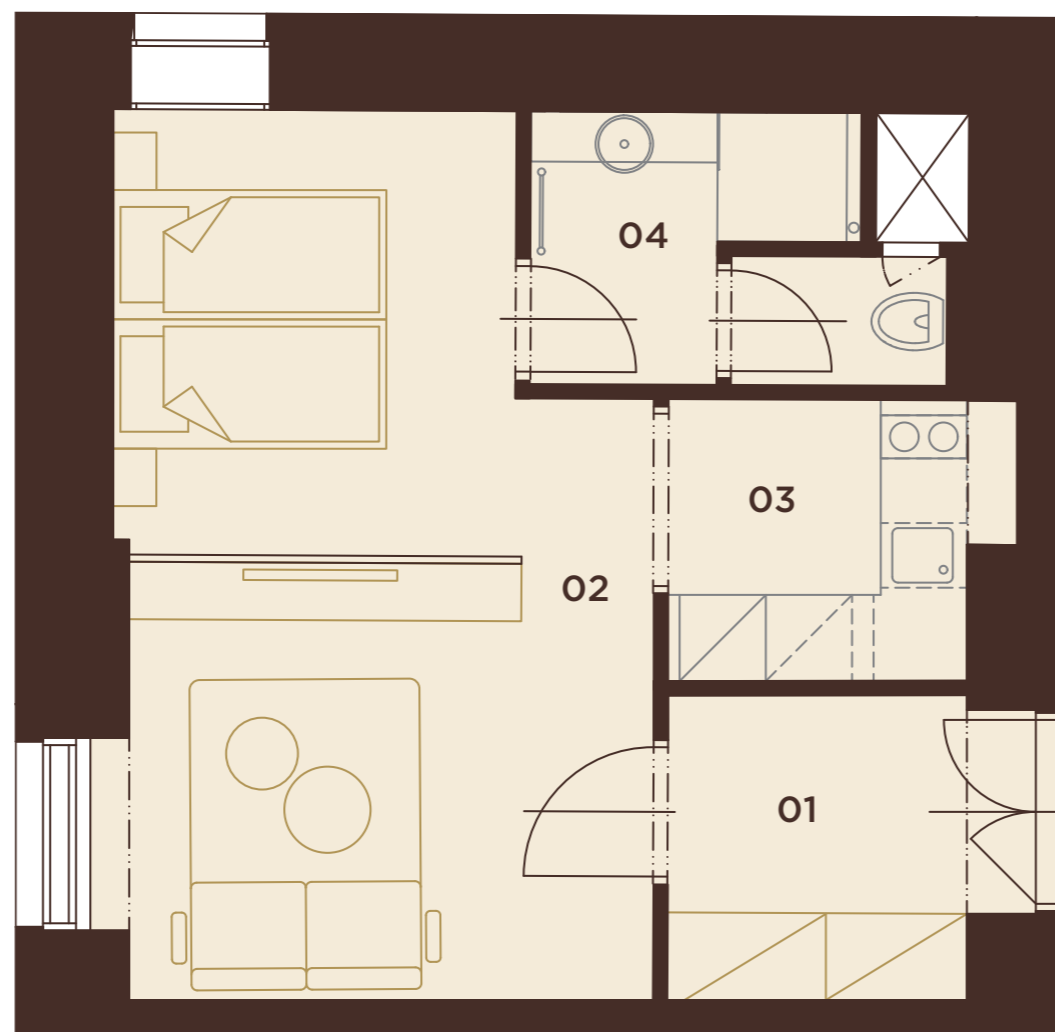
1+kk | 35,9 m<sup>2</sup>

01	předsíň	4,9 m <sup>2</sup>
02	obytný prostor	21,1 m <sup>2</sup>
03	kuchyňský kout	4,1 m <sup>2</sup>
04	koupelna + WC	4,8 m <sup>2</sup>
<b>UŽITNÁ PLOCHA</b>		<b>34,9 m<sup>2</sup></b>
<b>PODLAHOVÁ PLOCHA</b>		<b>35,9 m<sup>2</sup></b>



### 2.NP

POHLED ZE ZAHRADY



# VODIČKOVA 33