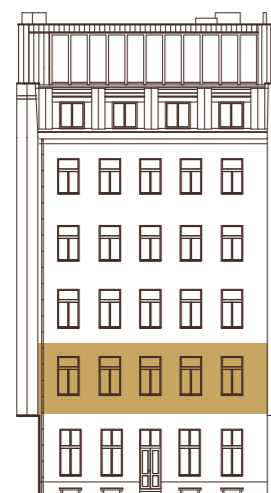
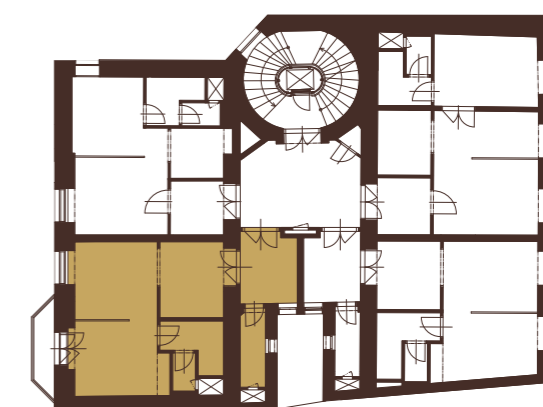


B.2.3

2.NP

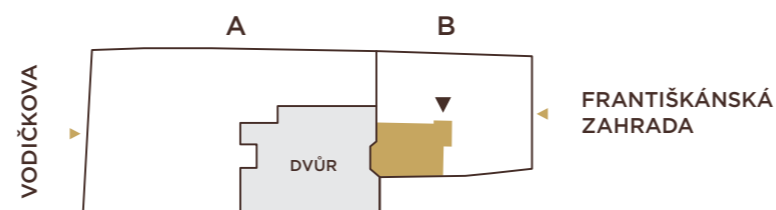
1+kk | 48,6 m²

01	předsíň	6,3 m ²
02	obytný prostor	22,0 m ²
03	kuchyňský kout	8,6 m ²
04	koupelna + WC	5,3 m ²
05	komora	3,1 m ²
UŽITNÁ PLOCHA		45,3 m²
PODLAHOVÁ PLOCHA		48,6 m²
06	terasa	2,8 m ²



2.NP

POHLED ZE ZAHRADY



VODIČKOVA 33