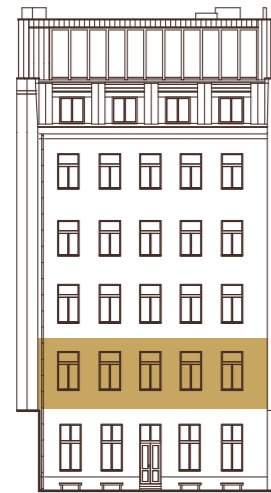


# B.2.1



## 2.NP

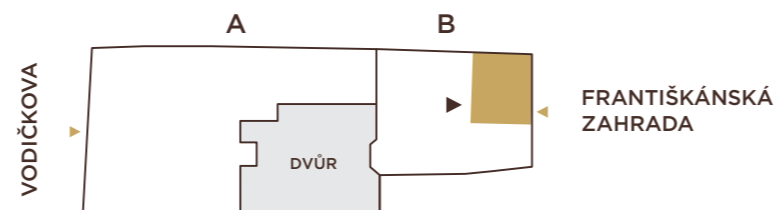
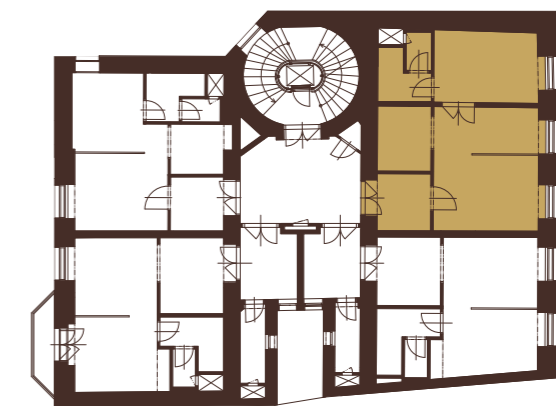
POHLED ZE ZAHRADY



## 2.NP

2+kk | 49,7 m<sup>2</sup>

01	předsíň	5,2 m <sup>2</sup>
02	obytný prostor	20,4 m <sup>2</sup>
03	kuchyňský kout	5,6 m <sup>2</sup>
04	pokoj	12,0 m <sup>2</sup>
05	koupelna + WC	4,7 m <sup>2</sup>
<b>UŽITNÁ PLOCHA</b>		<b>47,9 m<sup>2</sup></b>
<b>PODLAHOVÁ PLOCHA</b>		<b>49,7 m<sup>2</sup></b>



# VODIČKOVA 33